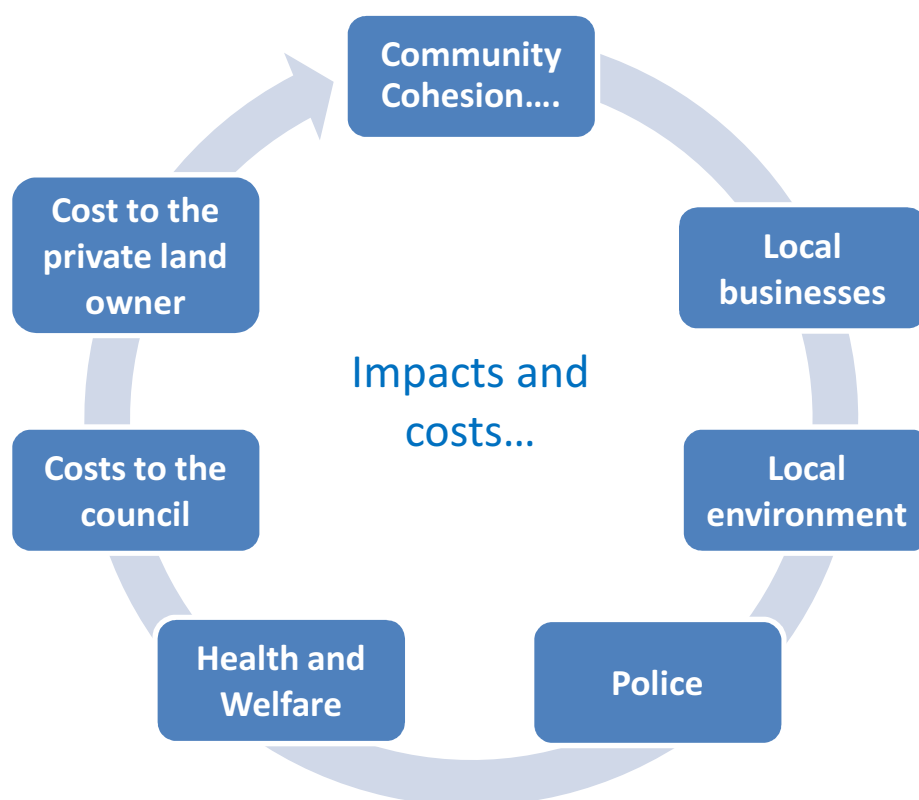


Appendix 1: Social and economic effects of unauthorised encampments



	Impacts (social and economic)	Costs (based on 2014/15)
Local Businesses	<p>Local businesses feel the impact of unauthorised encampments in a number of ways, so costs are quantifiable:-</p> <ul style="list-style-type: none"> • Impact on business reputation • Loss of business • Cost to evict Travellers (court and bailiffs) • Health and Safety for both staff accessing the premises and the Travellers who could be at risk of accidents involving Heavy Goods Vehicles • Clean up costs 	<p>Estimated average cost £2,000 per encampment (this is dependent of length of stay):</p> <p>£22,000</p>
Private Land owners	<p>Private landowners have the responsibility of taking the appropriate action to evict Travellers this includes court and bailiff costs and clean-up costs following encampments.</p>	<p>£55,600</p>
Local Environment	<p>Damage can be caused to the local environment during and following encampments. Some Travellers will camp on playing fields which are used by the general public for leisure activities. Vehicles can churn</p>	

	up playing fields and It is essential that any human waste is cleaned up.	
	Estimated clean-up costs on previous encampments on school land equated to £10,000 but there were none in 2014/15	
Police	In the majority of cases the police are called upon to deal with unauthorised encampments. This comes at a cost.	£42,000
Health and Wellbeing	Not only are there implications for the residential community but Travellers are not able to access amenities on unauthorised encampments which can impact on their health and wellbeing. Travellers will often access A&E services as they are not able to register with a local doctor.	
Council Services	Unauthorised encampments impact on a number of council services, which have cost implications. We employ a full time Gypsy and Traveller Liaison Officer and contribute towards the Sub Regional Gypsy and Traveller Coordinator which equates to £55,622 . In addition to these costs during 2014/15 Cheshire East incurred a further £48,498 in relation to legal, clean-up and other associated costs.	£ 104,120
Community Cohesion	Unauthorised encampments can result in community tensions which can lead to negative publicity articulated via local papers which have the ability to impact on the reputation of the Local Authority. Negative publicity around the Gypsy and Traveller community can result in significant opposition towards the development of permanent residential sites. It is a requirement for Local Authorities to allocate land through the Local Plan process for the provision of sites, which can become quite contentious.	
Total		£ 223,720